

HOT AIR BLOWERS

FOR A LARGE VOLUME OF HOT AIR TO WARM, BEND, SHRINK OR BUTT WELD

NEW!!!

MISTRAL

\$ CALL



brushless motor

Technical Data

MISTRAL	120V/230V
Wattage	2700W
Frequency	50 / 60 Hz
Temperature	20—650 °C Variable
Air flow	350 l/min. max.
Pressure stat.	3000 Pa (30 mbar)
Weight	2 lbs.11 oz with cord
Cable	9 ft, 10 inches

Double insulated

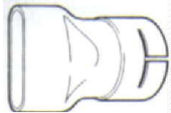
ELECTRON

\$ CALL



ELECTRON Technical Data

Voltage	V ~	120 230
Power consumption	W	2700 / 3400
Frequency	Hz	50/60
Temperature	°C	20 - 650 , steplessly controlled
Air Flow	L/min	approx. 320
Pressure static	Pa	approx. 3000
Weight	Kg	1.5 with cord



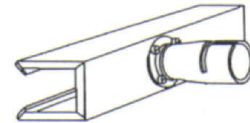
107.258
WIDE SLOT NOZZLE
2 3/4" x 3/8"



107.229
ROUND NOZZLE
3/4" OPENING



107.257
SLOTTED NOZZLE
23 5/8"
SLOT LENGTH 16 1/2"



107.340
SHELL REFLECTOR
1 3/4" x 9 27/32"

WARMING BENDING

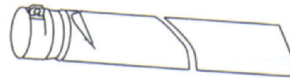


107.254
FLANGE CONNECTOR
FOR MOUNTING
IN MACHINERY

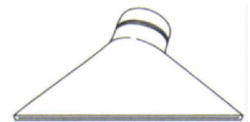


107.256
ELBOW NOZZLE
2" DIAMETER
6 5/16" x 4"

SHRINKING

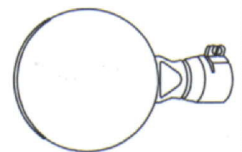


107.347
TEFLON COATED
HOT AIR SWORD
20 7/8" LONG

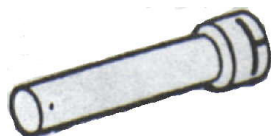


107.270
WIDE SLOT NOZZLE
5 7/8" x 1/2"

WELDING



107.346
TEFLON COATED
WELDING MIRROR
10 5/8" DIAMETER



107.255
EXTENSION NOZZLE
1 7/16" x 6 5/16"



107.266
WIDE SLOT NOZZLE
3" x 1/16"

WDD 572
ADAPTOR
ELECTRON TO
TRIAC NOZZLE'S